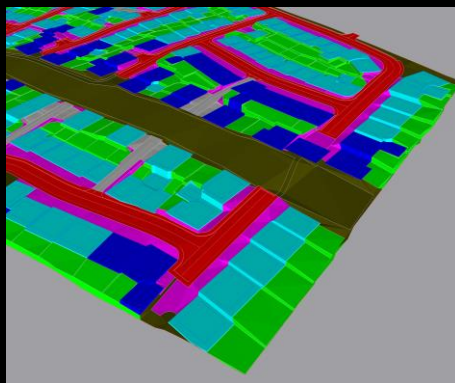
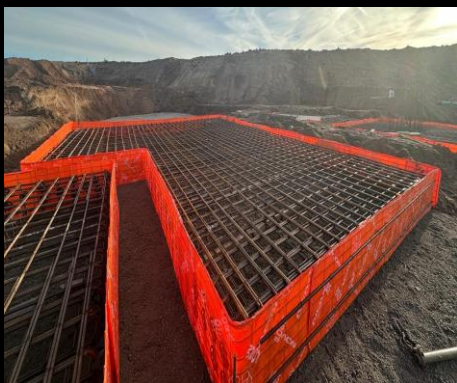




construction solutions from concept to completion – expertly delivered and quality assured



Established Since

2013



200+

Items of DXI Owned
Plant and Equipment



100+

Experienced Members
of Staff

DXI Regeneration

Trinity Square Business Centre,
3 Trinity Square,
Llandudno,
Conwy,
LL30 2PY

DXI Regeneration

Landgate Business Centre,
Wigan Road,
Ashton-in-Makerfield,
Wigan,
WN4 0BX

DXI Regen

Mocatta House,
Trafalgar Place,
Brighton,
BN1 4DU

FOLLOW OUR JOURNEY

 DXI Regeneration Ltd


 DXI Regen Ltd


 @dxi_ltd

 www.dxiltd.co.uk

CONTACT US

 info@dxiltd.co.uk

 North and Wales
01942 720325

 South
07758 820499

PREVIOUS CLIENTS

LOVELL

BLOOR HOMES



Seddon



**JONES
HOMES**

Bellway







MCDERMOTT

Introduction



Est.2013

DXI Regeneration
DXI Regen
DXI Civil Engineering
DXI Plant Hire

Nationwide reach
with offices in North,
South and Wales

200+ items of
owned and
operated plant and
equipment.

Overview

Founded in 2013, DXI brings together decades of civil engineering expertise and experience. Using our **range of businesses with nationwide reach**, we excel in the completion of construction, engineering, and multi-utility projects across a broad spectrum of applications, industries and sectors.

Services

We provide a complete range of services to guide your project seamlessly from **concept to completion**, ensuring every phase is expertly managed for optimal and cost-effective results. Our comprehensive range of solutions includes **feasibility analysis, demolition and decommissioning, brownfield remediation, earthworks, infrastructure and drainage, construction, facility management, and more.**

Approach

We achieve this through utilising a **collaborative** and non-adversarial approach, an integrated **team of experienced and highly-skilled professionals, our owned and controlled plant and equipment**, and a **supportive supply chain**. We work closely with clients and specialist experts to ensure successful contract completion while fostering strong, positive relationships, leading to a high percentage of repeat business.

Locations

With offices in the North and South of England, and Wales, we provide a **national service across the United Kingdom.**



Values

Exceeding Expectations

At the heart of DXI's culture is a **'right first time'** mindset. We ensure seamless and quality-assured project delivery through effective programming, resource management, and team coordination. Our commitment to quality ensures we **always meet deadlines, stay within budget, and deliver on every promise**. Our success is proven through client testimonials, a diverse portfolio of completed projects, and a **strong track record of repeat business**.

Safety

The **safety of our team members, visitors and the public is our top priority**. The importance of safety is deeply embedded in our culture and underpinned by rigorous health and safety measures and monitoring, strict compliance to industry standards and regulations, and proactive identification and mitigation of potential risks.

Expertise

Our team of dedicated, experienced professionals bring **years of specialised knowledge and technical expertise**. We ensure our team are well-trained and highly skilled, so they have the capability and adaptability to deal with changing project demands. **DXI are large enough to cope, and small enough to care**.

Socially Responsible

We strive to minimise our environmental footprint by adopting more **sustainable processes and utilising responsibly sourced materials**. We uphold high standards of ethical business practices and actively engage in philanthropy through **charitable initiatives and investment into communities**.

Collaboration

We uphold a non-adversarial approach to contracts by engaging contractors early in the process, fostering collaboration, and leveraging our expertise to deliver value-engineered solutions that are tailored to each client's needs. We believe that **trust is built through consistent, transparent, and proactive communication**.



Services

Feasibility Studies

Feasibility Studies

In-House Engineering & Analysis: We perform analysis of former site usage, ground conditions, contamination issues; incorporating design philosophies and inputs.

Land Surveying: We use state of the art technology to conduct a variety of surveys from ground base to aerial topographical surveys.

Volumetric Analysis & Modelling: We model existing levels, base of made ground, and the proposed design to analyse materials generation, reusable volumes and additional processing

Feasibility Costing: Volumetric calculations, analysis of designs, and ground conditions at the pre-construction stage enable us to innovate cost-effective design solutions.

Remediation

Remediation

We deliver comprehensive site reclamation and remediation solutions for brownfield and contaminated land by offering cost-effective solutions including re-engineering, stabilisation, and site clearance services.

Earthworks: Our bulk earthwork capabilities include excavations, cut and fill, material reengineering services, decontamination, and waste management.

Demolition & Decommissioning: We provide demolition, deconstruction, and decommissioning services in a safe and controlled environment, and work closely with the Environment Agency to minimise our environmental impact.

Civil Engineering

Civil Engineering

From concept to completion, we provide complex and comprehensive civil engineering solutions to clients operating in a range of sectors.

Infrastructure & Drainage: Our expertise includes excavations, drainage, ducting and cabling, and hard and soft landscaping. During pre-construction, we provide enabling and temporary works for site preparation followed by reinstatement and finishing upon completion of the works.

Construction: We have a proven history constructing a range of structures both above and below ground including new builds, reinforced concrete structures, and steel buildings.

Environmental and Renewables

Environmental & Renewables

Facility Management: Our services include construction, maintenance, and restoration of waste management and renewable energy facilities. We collaborate with clients and specialist environmental experts to assess opportunities for conservation and ensure a biodiversity net gain.

Plant and Equipment



Fleet

With an impressive plant fleet of over **100 items of operated plant** we strive to deliver projects using our own resources with little recourse to external hire.

We benefit from a diverse range of owned fleet holding, including **small power tools, mobile plant, agricultural equipment, ground care equipment, temporary accommodation, commercial vehicles, and more.**

Safety, Reliability and Efficiency

Our comprehensive fleet of equipment is purchased from leading manufacturers to **ensure safety, reliability and efficiency**. Equipment is purchased with service contracts and extended warranties to ensure full dealer level support is received nationwide. All equipment is maintained to the manufacturers strict service schedules to ensure reliability, and all statutory safety inspections are achieved and exceeded. Our in-house fleet recording system operates to ensure all defects are reported, recorded and closed out efficiently and with full traceability in a timely manner.

Telematic systems are monitored to ensure all equipment and vehicles are operated to **maximise efficiency**. Environmental aspects are never compromised, and we are always keen to explore new technologies and products such as **hybrid plant, HVO fuels and renewable energy**.

We proactively monitor our plant operators' certifications to ensure **regular training is completed for safe use of our plant and equipment**.

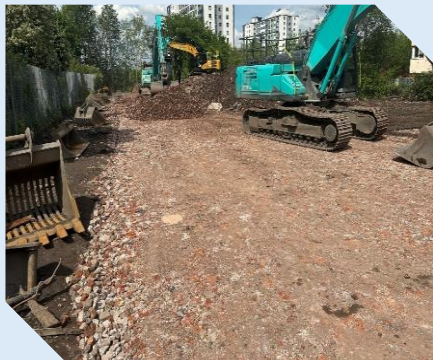


Case Study

Remediation and Drainage

Client Value Details

Eric Wright Construction
£400,000
Remediation of site with relic structures, engineer piling platform & installation of attenuation tank and off-site drainage



DXI undertook enabling works for a new Passivhaus student accommodation at Peru Street, Salford for Eric Wright Construction. The works comprised forming new entrances into site over dense existing services, removal and crushing to 6F2 of relic structures, chemical testing of suitability for retaining soils, engineering of piling platform for CFA and installation of drainage, all under an archaeological and UXO watching brief.

Located in a busy area of Salford with space constraints, the former public baths had been infilled and replaced by a car park using imported soils. Prior to removal, Salford University had to document the former stone structures, with careful removal and relocation of the existing soils, with a UXO specialist in attendance due to high risk from historical WW2 bombing of the area.

All relic structures were removed, and along with the soils that were screened using specialist buckets due to limited room on site, were processed for reuse within the piling platform. This operation mitigated the vast majority of disposal from the site and removed the need to import what was believed to be a shortfall required to meet the piling platform design.

In advance of the Frame Contractor commencing works, both off and on-site drainage works were undertaken to connect to existing United Utilities assets. This was sequenced to minimise program duration on an already tight scheme, and to avoid deep excavations further into the build phase. Liaison and design reviews of temporary works were undertaken to ensure a capping slab was installed to prevent subsequent damage to the installed attenuation tank.

Close liaison and advice was provided to the Client during the tendering and production stage to maximise the efficiency of the operations undertaken and facilitate savings to the costs of the enabling works package.

Case Study

Remediation and Bulk Earthworks



Client Value Details

Bloor Homes
£2.3mn
Remediation of LNAPLS impacted soils, removal of relic obstructions & earthworks to detailed levels



DXI completed post-demolition remediation and bulk earthworks at the former Suttons Transport Depot, next to St Helens Linkway for Bloor to help deliver 246 new homes.

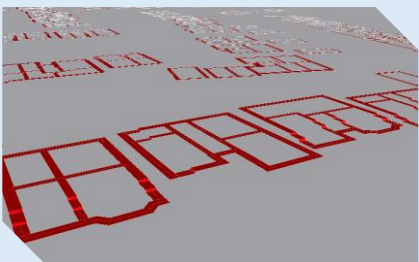
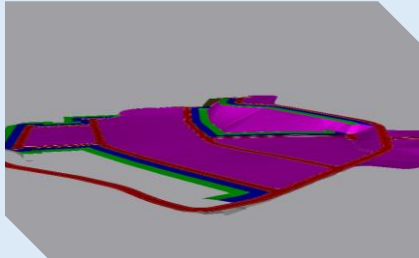
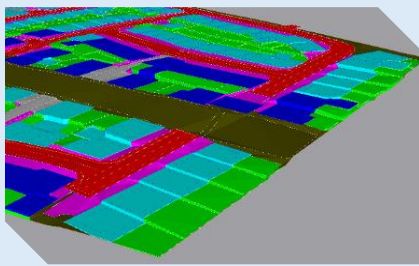
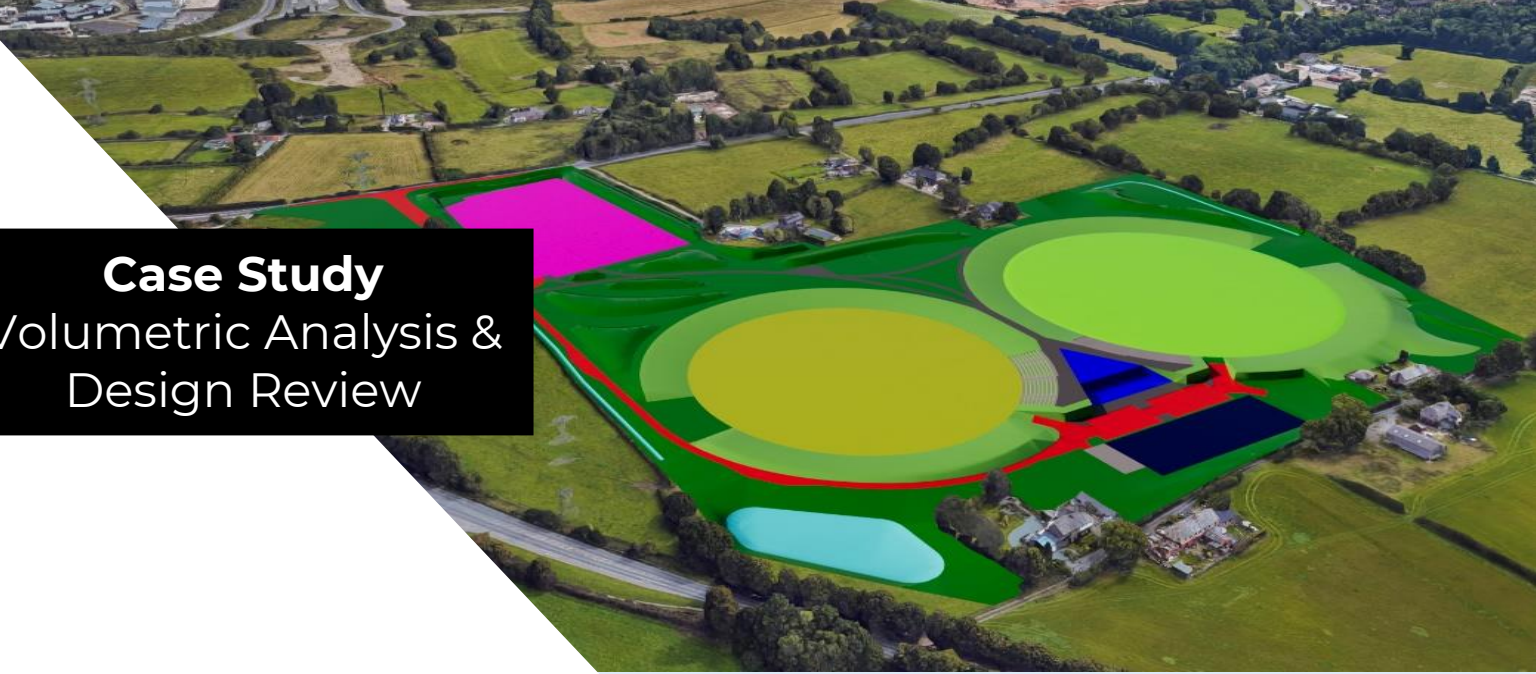
Due to a historical fuel spill that resulted in LNAPL contamination, a designed solution combining skimming and binding of contamination reduced the volume that remained to a level below target levels, which was subsequently verified by the 3rd party Geo-Environmental Consultant for sign-off.

Removal of asbestos impacted soils, invasive species and buried obstructions for processing to 6F2 was also carried out, in addition to the bulk earthworks in excess of 200,000m³. Geotechnical testing was undertaken on all material placed, including Nuclear Density Gauges, Sand Replacement Density, CBR's and Incremental Plate Loads, along with a full suite of chemical testing to prove compliance with the Remediation Strategy.

The entire scheme was a result of 2 separate land sales, with part of the site being previously being unable to receive any site investigation or accurate level surveys. As a result of this, once access was granted, additional excess soils and geotechnical issues were found. Working with the Bloor and their Consultants, DXI facilitated a change in design to mitigate cart-off and also proposed changes to methodologies to remove the need for costly proprietary solutions that would have hindered the build-phase of the works.

Case Study

Volumetric Analysis & Design Review



As part of the tendering process, DXI review all of the information supplied by the Client in detail to understand former site usage, ground conditions, contamination issues and design philosophy for the proposed scheme, allowing for a comprehensive review and analysis. This assessment allows for the building of a detailed picture of how earthworks and remediation can be undertaken in accordance with approved strategies.

At tender stage, the existing levels, base of made ground and proposed design are modelled to analyse materials generated, the volume that can be reused, any additional processing required and any surplus or deficit in the volumes. This allows DXI to propose betterment to Clients that may not have been considered and is why many choose to have early engagement with DXI to look at schemes so that a collaborative effort can be made. This close working relationship with Clients and their Consultants have, in many cases, allowed for changes to overall strategies and design levels to reduce or even remove costly disposal and programme savings. DXI can also work with 2D illustrative layouts to develop and propose initial regrade strategies as part of viability assessments.

On contract award, the models used to produce the tender information are able to be used immediately to upload to our own Machine Control systems, Total Stations and GPS systems. Any subsequent design changes to designs can be sent remotely to minimise any possible downtime.

Prior to commencement, drones and pro level cameras are used to undertake detailed dilapidation surveys to show the condition of existing roads and properties. With regular progress photographs taken to help record the works, it will allow Clients to see their schemes from a different perspective.

Case Study

Household Waste Recycling Centre

Client Value Details

FCC Environment
£1.9mn
Refurbishment and modification
of an operational transfer station
to enable public access for
household waste recycling.



DXI constructed a new Household waste Recycling Centre, for residents in Suffolk. The works were completed within an active waste transfer station, where close liaison with the client was required to enable the programme to be achieved, whilst maintaining the full operational requirements for the existing business..

The works comprised the forming of a new segregated vehicle access and egress to the site, with on-site parking and laydown areas being established.

Modification and repair of the existing steel framed and clad building were required to form new openings, to upgrade the performance of some structural elements, and to improve the external appearance of the location.

Within the existing building an elevated platform was constructed for high level access to allow cars to segregate their wastes into recycling transport containers. A series of high-level gantries, segregation bollards, car barrier and anti-scale fencing were installed.

The existing site environmental controls were replaced with a new scheme of lighting, power distribution, symphonic drainage, and an integrated atmospheric monitoring and ventilation system. Fire detection systems were also installed alongside a comprehensive fire fighting system.

The works also included the installation of office, welfare and full public access temporary buildings, equipped with full ramps and 'warm to touch' fitting.

Case Study Groundworks

Client Value Details

Jones Homes
£2.3mn
Groundworks including plot foundations and external finishing within a steeply inclined and primarily rock strata location.



DXI completed external finishing to plots, where we had previously installed the foundation solutions, for Jones Homes at their Kendal development.

The site mostly comprised of a steeply inclined surface, with hard rock situated below, and outcropping within the boundary.

External finishing was completed to deliver high specification flags, driveways, and other surfacing, to an exclusive development.

Retaining walls and step features were required at many plot boundaries and within plots. These comprised a combination of traditional wooden fencing, masonry, and stonework walling, as well as precast retaining walling units with walls up to 3.5m in height constructed.

Testimonials



**ERIC WRIGHT
GROUP**

“Eric Wright Construction have worked with DXI on several projects, the largest being the new Lancashire County Cricket Ground. This involves the construction of two new pitches, infrastructure, a pavilion building, parking, a lagoon, earthworks, and mounding on former farmland. **DXI are professional and brought technical solutions to a difficult build. Having their own plant with GPS control capability and a competent workforce made easy work of controlling such a large site.** The reinforced concrete works to the pavilion were carried out safely and to a high standard. I look forward to using them on future projects.”

- Peter Grover, Chief Engineer, Eric Wright Construction

Seddon

“DXI are highly professional and have extensive knowledge in their field. They’re great team players – approachable in all scenarios and always willing to go the extra mile to help. The project presented several challenges, but DXI’s expertise was particularly valuable in resolving on-site issues such as asbestos and waterlogged ground. With their knowledge we redesigned pile mats and worked with the asbestos, saving a substantial amount of time and money. Their help allowed us to maintain the programme whilst keeping costs and delays down to a minimum. **We have a great working relationship with DXI, built on mutual understanding of each other’s businesses and shared values with regards to trainee’s and apprenticeship’s.** We would definitely work with DXI again in the future.”

- Lee Makin, Operations Manager, Seddon Construction.

L&Q

“Following a tender process, we engaged with DXI on a highways infrastructure project with very tight programme timescales to achieve completion and enable access to a strategic development site for a Lidl Supermarket and residential homes. **DXI were fantastic to work with, offering potential value engineering and programme solutions to help meet the timescale and budget.** The project benefitted from their excellent working relationship and experience with Lancashire County Council, and was completed early, on programme, to budget and of a high standard.”

- Fred Crawshaw, Head of New Business, L&Q Group

Corporate Social Responsibility



We are dedicated to being recognised as an organisation that values corporate social responsibility.

We believe in upholding the highest standards of ethical business practice and operating in an open, honest, and ethical manner. We're committed to responsible and sustainable business practices that create a positive impact on society, the environment, and the economy. By upholding these principles, we strive to foster a culture of trust, respect, and shared value with all stakeholders.

Our team are encouraged to integrate corporate social responsibility considerations into their daily work and ensure it's a priority in decision-making.

We believe in treating all employees fairly, with dignity, and with respect for their individual goals and aspirations. We adhere to fair labour practices and are committed to equal opportunities and ensuring our workplace is free from discrimination, intimidation, or harassment.

We actively work with governments and agencies to support human rights and do not tolerate human rights abuses, nor do we engage activities that encourage such abuses. We aim to build trust, deliver mutual benefits, and demonstrate respect for the cultures, customs, and values of all people.

We are proud supporters of various charters and initiatives that demonstrate our commitment to social value, ethical business practices, and staff wellbeing and development.

We actively engage in philanthropy through charitable initiatives and investment into communities. Community investment considerations are ingrained into our business decisions and operations, aiming to build local capacity and develop positive, mutually beneficial relationships with the communities we work in.



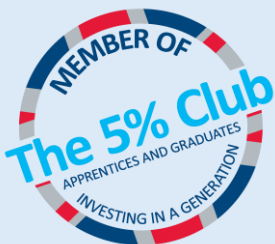


Talent



University of
Salford
MANCHESTER

PRESTON
COLLEGE



We strongly believe in investing in the youth of today, as they are the future of our industry. Young people bring enthusiasm, a strong work ethic, and a fresh perspective, and we are proud to support them through the start of their career journey whilst also being able to 'grow our own' talent.

We have our very own "Young Talent Team" made up of young professionals who are studying, learning, or relatively new to the construction industry. As part of this team, we have several valued individuals undertaking degree apprenticeships and T-level students gaining work experience.

We pride ourselves on being able to offer 1-to-1 mentoring and supervision with skilled professionals who have years of industry experience. This includes our company directors, who take a hands-on approach to supporting any young professionals who join the DXI team.

"I enjoy the family feel of the business and how collaborative working is encouraged. **The support and guidance I've received from my line manager and senior management as a young professional have been invaluable.**"

"I've been doing work experience with DXI for a year and have enjoyed every minute of it, with each week offering a slightly different experience."

"DXI have provided countless opportunities to learn and develop. I've been supported in completing additional training, including the Site Supervision Safety Training Scheme (SSSTS), Site Management and Safety Training Scheme (SMSTS), and First Aid – all of which I've completed while working here, alongside my degree studies."

"The mentorship from DXI staff has been excellent, with each person teaching me something slightly different. **Everyone has taken the time to aid my education and learning on site.**"

"DXI has always supported me in balancing my work and studies, providing additional opportunities and support to complete university work when needed."



Sustainability

Support, comply with and where possible, **exceed current environmental legislation** and best practices.

Minimise waste and prioritise reusing or recycling materials

Conserve energy and water in our buildings, vehicles and operations.

Promote **sustainable methods of transport** and car sharing.

Reduce air, water, noise and light **pollution**.

Prefer products and services with **minimal environmental impact**.

Evaluate environmental impact of any new product or process.

Commitment

We passionately believe that as a business we are responsible for maintaining responsible environmental practices and operating sustainably. Reducing our environmental impact and continually improving our performance are integral and fundamental parts of our business strategy and operational methods. **Through the expertise of our environmental specialists, we strive to minimise our environmental footprint by adopting more sustainable methods and utilising renewable materials.**

We aim to inspire and encourage our customers, suppliers, business partners and associates to adopt similar practices. **We believe this not only makes sound business sense for all but also fulfils our duty of care to future generations.**

Our team focuses on:

1. Reducing waste through innovative reuse and recycling strategies.
2. Minimising carbon footprints by optimising fuels, materials and operations.
3. Reducing our impact on the environment by monitoring air, water, noise and light pollution.

Collaboration

Sustainability isn't just about compliance, it's about creating lasting value for communities; and **at DXI we'll always collaborate with partners who share our vision of a greener, more resilient, built environment.**

Health and Safety

Health and Safety Culture

The safety of our team members, visitors and the public is our top priority. The importance of safety is deeply embedded in our culture and underpinned by rigorous health and safety measures and monitoring, strict compliance to industry standards and regulations, and proactive identification and mitigation of potential risks.

With **a zero-tolerance approach to safety risks**, we are dedicated to ensuring that every member of our team understands and accepts their health and safety responsibilities and actively implements our health and safety management systems for us to consistently uphold our high standards.

System

Health and safety is at the core of our services from start to finish. Our systems include comprehensive staff and site inductions, thorough development of risk assessments and method statements prior to work commencing, weekly toolbox talks on every site, structured use of various health, safety, quality, and environment forms, and monthly site inspections conducted by internal and external health and safety advisors. We also prioritise near-miss reporting with swift corrective action, fostering a culture of continuous improvement and accountability at every level.

We have achieved numerous accreditations which illustrate our commitment to health and safety.



Accreditations



DXI is dedicated to assuring quality and meeting the highest industry standards. As such our businesses are accredited by numerous industry leading bodies and are active members and supports of a variety of esteemed organisations and initiatives.

More specifically DXI Regeneration is accredited by

- Acclaim
- Achilles
- Construction Gold
- Construction Social Value
- ISO9001
- SMAS Worksafe

DXI Regeneration is also a member and supporter of

- British Safety Council
- Civil Engineering Contractors Association (CECA).
- North West Contractors Training Group
- Supply Chain Sustainability School
- People Matter Charter
- The 5% Club
- Greater Manchester Good Employment Charter



Contact Details

Head Office

Landgate Business
Centre
Wigan Road
Ashton in Makerfield
Wigan
WN4 0BX

Wales Office

Trinity Square
Business Centre
3 Trinity Square
Llandudno
Conwy
LL30 2PY

South Office

Mocatta House
Trafalgar Place
Brighton
BN4 1DU

To find out more about how DXI can help bring your engineering project to life, please give us a call, send us an email or even join us at one of our offices.

We can't wait to hear from you!

Telephone

Tel North	01942 720325
Tel South	07758 820499

Email

info@dxiltd.co.uk

Website

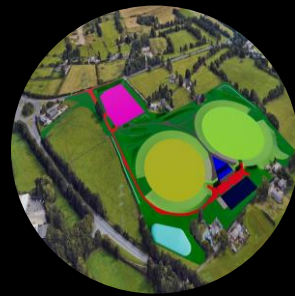
www.dxiltd.co.uk

Socials

LinkedIn	DXI Regeneration Ltd DXI Regen Ltd
Facebook	DXI
Instagram	@dxi_ltd



arrive safe - work safe - leave safe



Head Office:

Landgate Business Centre
Wigan Road
Ashton In Makerfield
Wigan
WN4 0BX

Tel: **01942 720325**

South Office:

Mocatta House
Trafalgar Place
Brighton
BN4 1DU

Tel: **07758 820499**

Wales Office:

Trinity Square Business Centre
3 Trinity Square
Llandudno
Conwy
LL30 2PY

Tel: **01942 720325**

Email: **info@dxilttd.co.uk**